

MORE BUSHELS WITH LESS WATER

Stretch your water by 30%

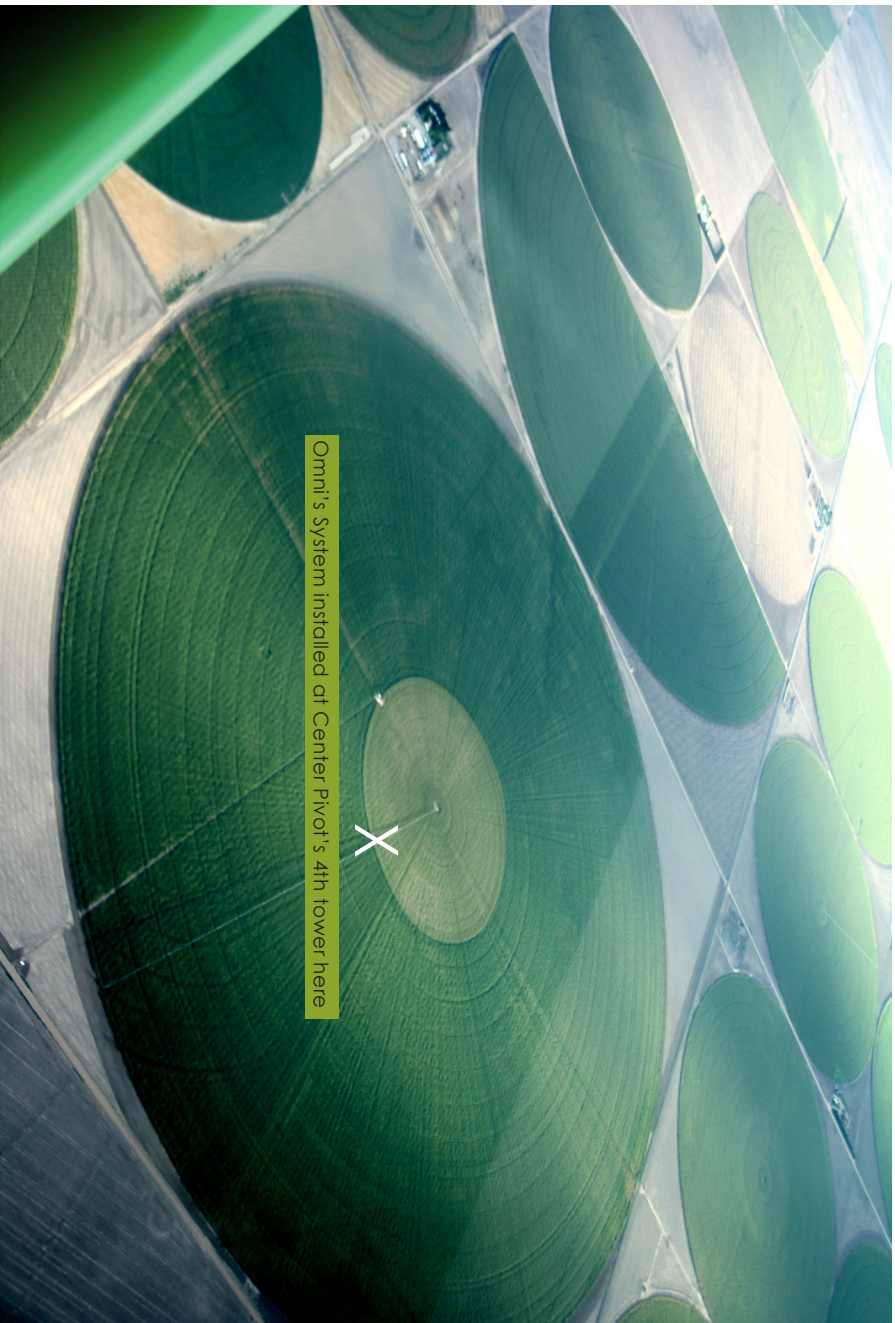


Tel 888 820 0363
Tel 510 879 7800
Fax 510 879 7801
OMNIENVIRO.COM
660 Fourth Street
Oakland, CA 94607

MORE BUSHELS WITH LESS WATER



Copeland, Kansas in current drought conditions. 481 acre field of corn with 1/2 mile pivot. Farmers are stretching their water resources with Omni's system.

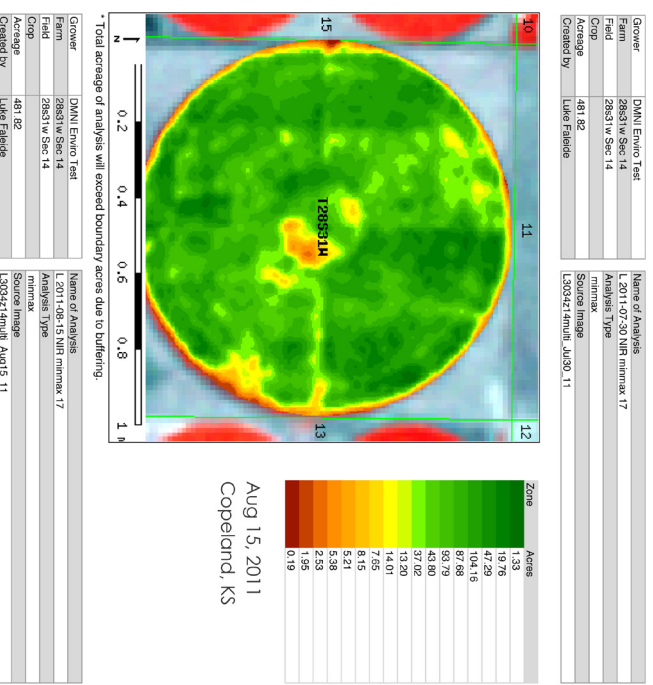
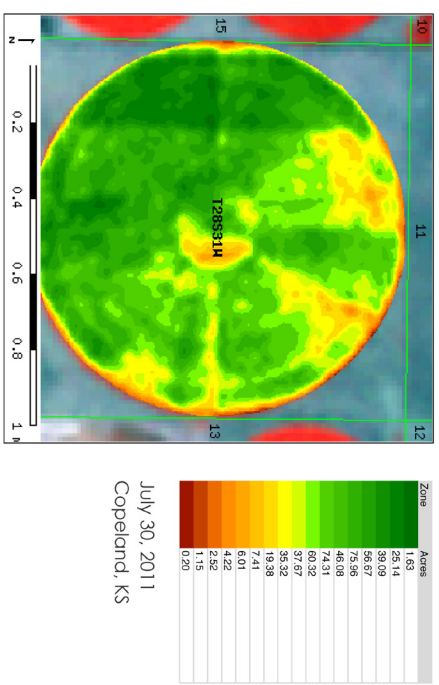


Note inner circle has more water used on the plants, and is still drier than the remaining acres in the field.

Omni's system is installed at the 4th tower in the span of the pivot, increased water penetration in the outer field.

Neighbor's field to the top left has same amount of water available for 1/2 the acreage.

Another neighbors field (to the top left of that) is completely dried up.



Total acreage of analysis will exceed boundary acres due to buffering.

Grower	DNVU Enviro Test	Name of Analysis
Farm	28831 w/ Spec 14	L 2011-08-15 NTR minmax 17
Field	28831 w/ Spec 14	Analysis Type
Crop		minmax
Acreage	481.82	(Source Image)
Created by	Lukas Falschle	L303427_email_Aug15_11

888 820 0363

OmniEnviro.com